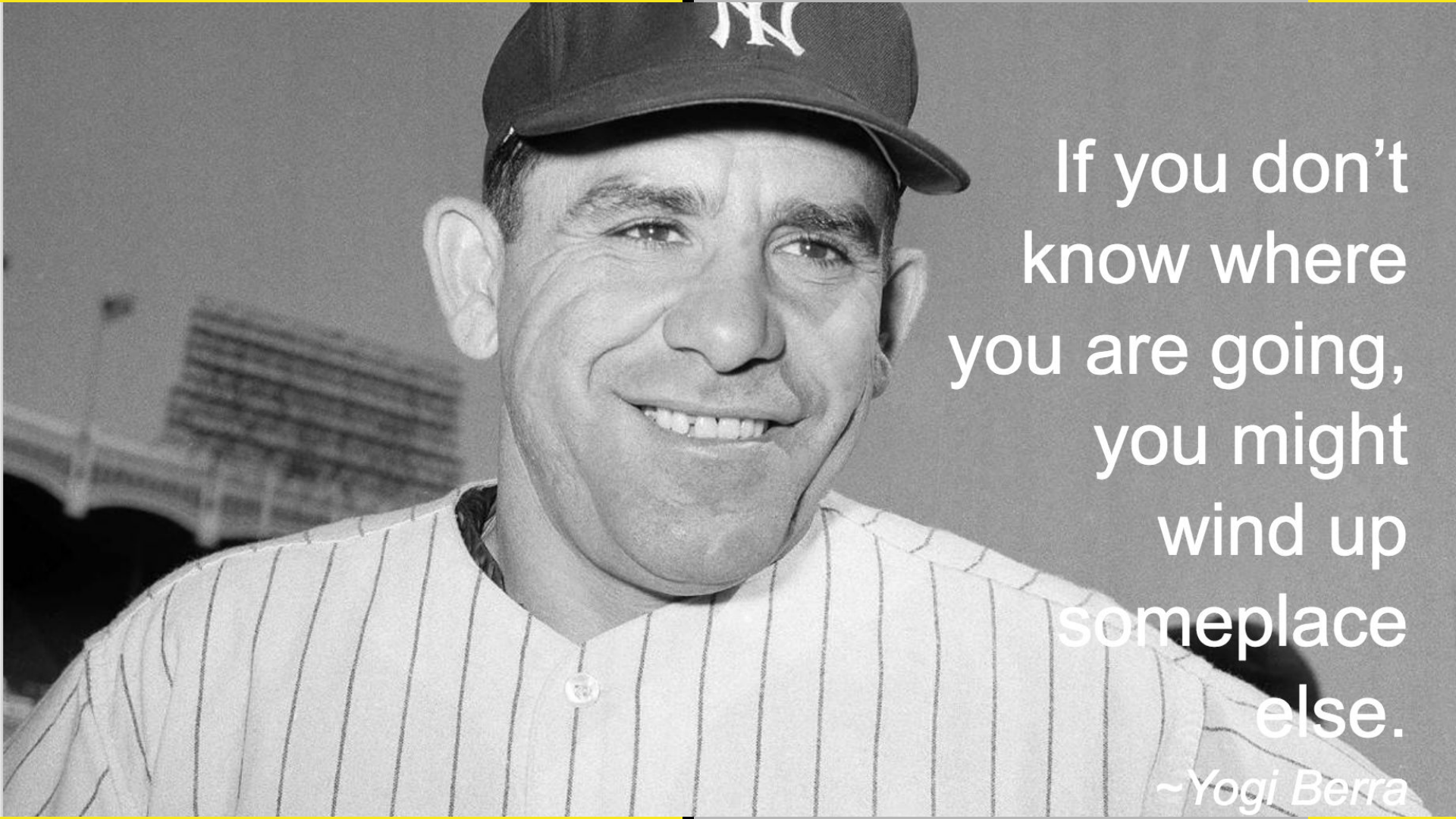


# **Facilities - Building Improvements Presentation 2016**

**Goal: Provide the best  
facilities while being fiscally  
responsible.**



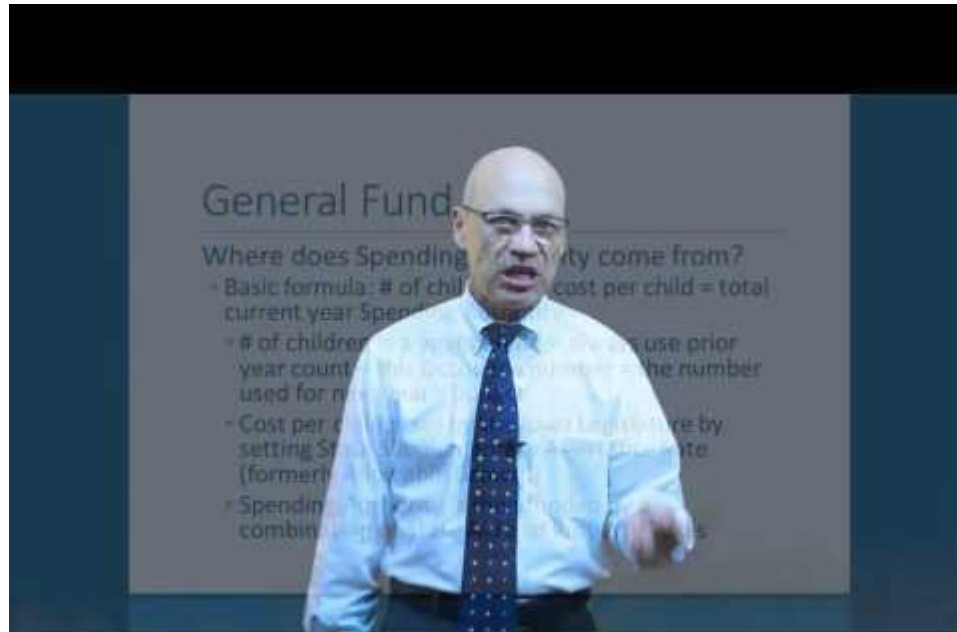


If you don't  
know where  
you are going,  
you might  
wind up  
someplace  
else.

*~Yogi Berra*

# Additional School Finance Information

<http://www.iowaschoolfinance.com/schoolfinancebasics>



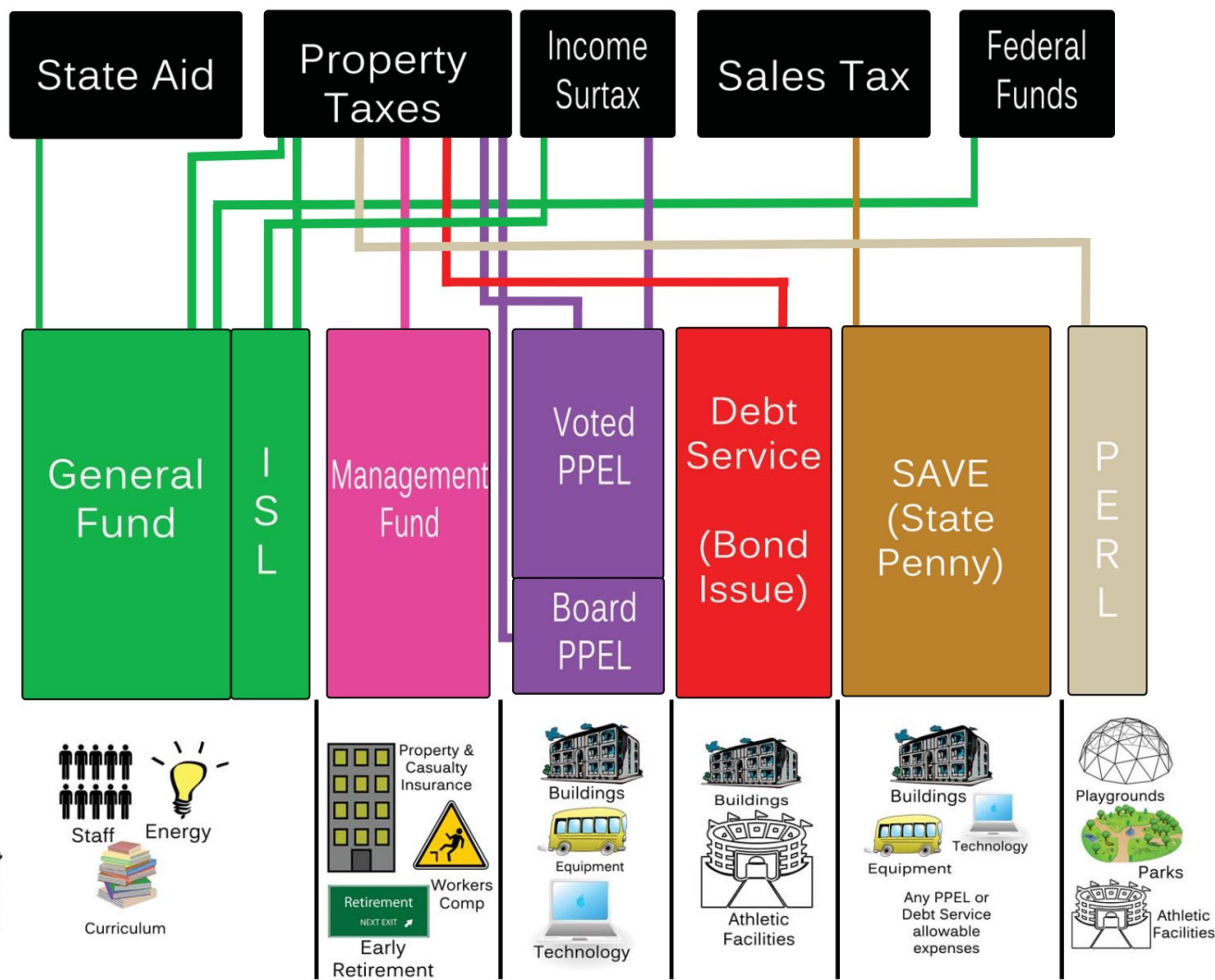
# **Time Frame**

**Special Election for Bond Referendum – February 7, 2017**

See StruXture handout for more detailed schedule.

# **Goal: Provide the best facilities while being fiscally responsible.**

- Comply with state/federal mandates
- Improve Student Achievement
- Provide Safe Learning Environment
- Maximize impact on upkeep of facilities
- Attract teachers and/or families
- Maximize support from community



# General Funds

- Today, **General Fund dollars are currently dedicated to instruction** – supporting classrooms with teachers, textbooks, heat and lighting, and providing for the library and support staff that students need.
- Some items currently funded with PPEL or SAVE funds are necessary, such as building renovations, buses and technology, science and equipment.
- If those items aren't funded with PPEL, then scarce General Fund dollars are left to cover those expenses.

# Physical Plant and Equipment Levy Funds

- There are two portions of the Physical Plant and Equipment (PPEL) levy – board approved levy and a voter approved levy.
- The purposes for usage include facilities construction and repair, buses, technology and equipment that exceeds \$500 in unit value (such as musical instruments and science lab equipment.)
- The board approved levy is limited to the equivalent of \$0.33 per \$1,000 of net, assessed taxable value. It will raise \$51,949 in FY17.
- A voter approved levy is limited to the equivalent of \$1.34 per \$1,000 of net, assessed taxable value. Approximately 70% of Iowa school district use.



# Sales Tax Funds

- Infrastructure Local Option (SILO) Sales Tax began funding Ed-Co school renovations and technology.
- SAVE, formerly known as SILO, became a state penny for the same purposes in 2009, authorized through Dec. 2029.
- Schools now receive a share per pupil of the state penny, estimated to be \$732 per student in FY 2017.
- The state penny revenue is insufficient to cover all of our district needs **IF IT MUST ALSO** pay for maintenance, technology, transportation, and building renovations funded in most other school districts with the PPEL.

# Past uses of PPEL & SAVE Funds

Bus – every two years

Technology – computers/network

Land

Door/Boiler Maintenance

Vehicles

HVAC Controls

Security Cameras

Resurface Track

LED lights



Hot water heater

Roof/gutters

Tuckpointing

# Revenue Options

## G.O. School Bonds:

\$2.70 Levy = \$6,300,000 (1 questions, 60%).....roughly “no tax increase” from prior payments

\$4.05 Levy = \$9,400,000 (2 questions, each 60%)....roughly \$1.35 tax increase from prior payments

## PPEL Notes:

\$0.67 Levy = \$930,000 (1 question, 50%+1).....added \$0.67 tax increase

\$1.34 Levy = \$1,870,000 (1 question, 50%+1).....added \$1.34 tax increase

## Sales Tax Bonds:

With RPS Vote, thru 2029 = \$1,800,000 (1 question, 50%+1).....no property tax implications

Without RPS Vote, thrus 2022 = \$1,450,000 (No voting required).....no property tax implications

---

# Revenue Options

## Hypothetical Project A:

- \$6,300,000 GO Bond + \$1,800,000 Sales Tax Bond = **\$8,100,000** project scope – current approved tax rate needs extended

## Hypothetical Project B:

- \$6,300,000 GO Bond + \$1,800,000 Sales Tax Bond + \$1,870,000 PPEL Note = **\$9,970,000** project scope – \$1.34 tax increase due to PPEL

## Hypothetical Project C:

- \$9,400,000 GO Bond + \$1,800,000 Sales Tax Bond = **\$11,200,000** project scope – \$1.35 tax increase due to the higher levy rate on the GO Bond

# Proposal

Preliminary Plan and Information:

<http://www.edge-cole.k12.ia.us/vimages/shared/vnews/stories/57ba21858cf5b/EDCO%20Master%20Plan%20oemail.pdf>

---

# Edgewood-Colesburg CSD Master Plan Cost Estimates

StruXture Architects

## Preliminary Cost Estimate

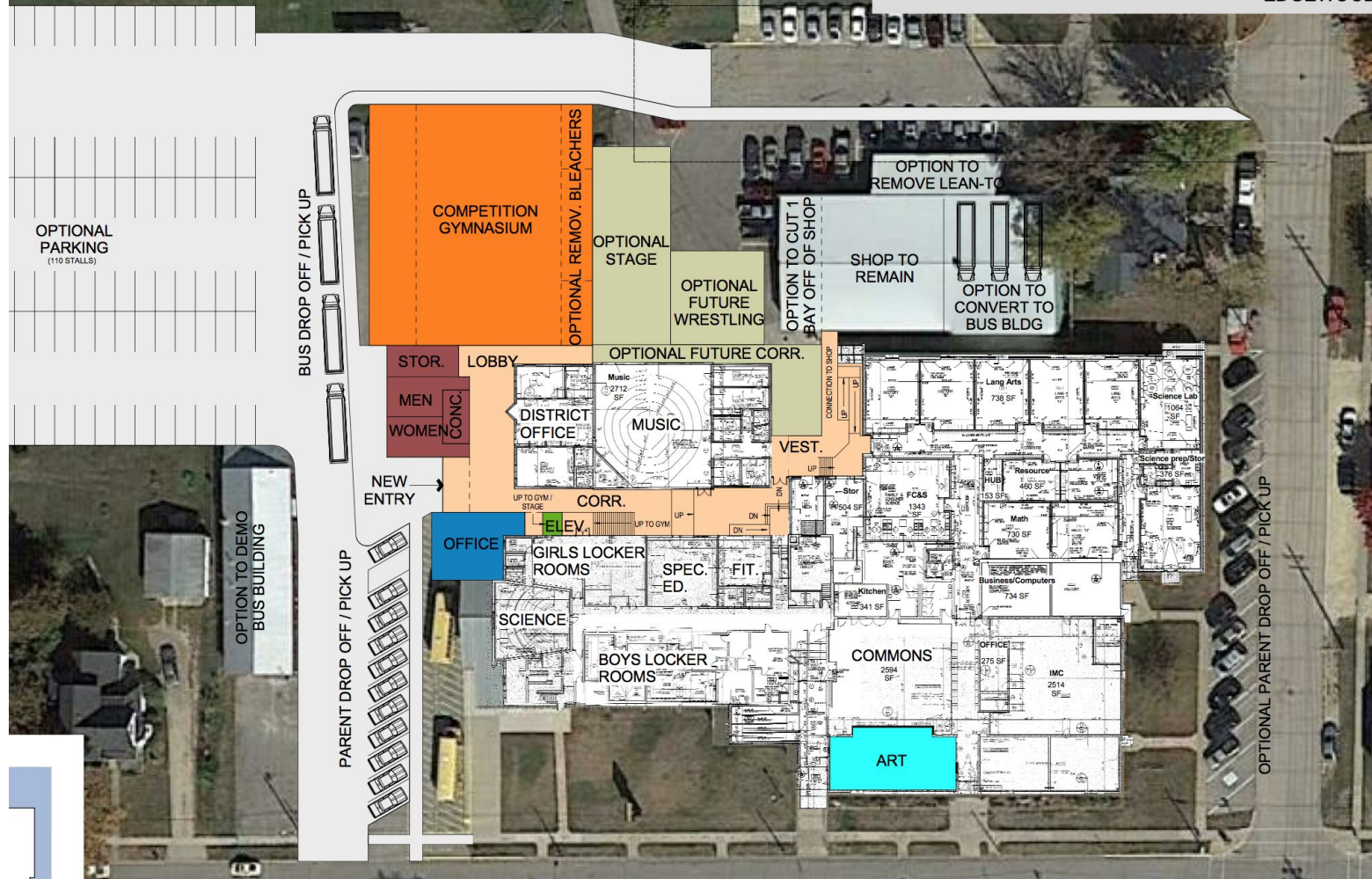
9/23/2016

	Unit	SF	Cost/ Sq Ft	Sub-Totals	Contingency & Fee	Totals
<b>Option 1</b>						
Replace Elementary HVAC System	61,350	SF	\$30.00	\$1,840,500.00		
Update Jr/Sr High School HVAC	34,600	SF	\$36.00	\$1,245,600.00		
Extend Jr/Sr High School DDC Control System to Orig. Bldg	34,600	SF	\$3.00	\$103,800.00		
Replace Orig. Bldg Switchgear, panels and conductors	1	LS		\$125,000.00		
<b>MEP Total</b>						<b>\$3,314,900.00</b>
Replace Windows at Elementary	1	LS		\$175,000.00		
Replace Windows at Jr/Sr High School	1	LS		\$75,000.00		
<b>Windows Total</b>						<b>\$250,000.00</b>
Refinish Elementary Gym Floor	1	LS		\$20,000.00		
Refinish Jr/Sr High School Gym Floor	1	LS		\$20,000.00		
<b>Gym Floor Total</b>						<b>\$40,000.00</b>
Rework Elementary Parking (Front & Back)	1	LS		\$155,000.00		
Jr/Sr. High School Parking / Drive	1	LS		\$600,000.00		
<b>Parking Total</b>						<b>\$755,000.00</b>
New Bus Building / Demo Bus Building	1	LS				<b>\$615,000.00</b>
New Shop / Demo Shop	1	LS				<b>\$850,000.00</b>
Update Restrooms at Elementary	1	LS		\$450,000.00		
Update Restrooms at Jr/Sr High School	1	LS		\$135,000.00		
<b>Restroom Total</b>						<b>\$585,000.00</b>
More Visible / Secure Entry at Elementary	771	SF	\$150.00	\$115,650.00		
More Visible / Secure Entry at Jr/Sr High School	380	SF	\$200.00	\$76,000.00		
<b>Entry Total</b>						<b>\$191,650.00</b>
Contingency					\$330,077.00	
Fees					\$467,885.00	
Additional Soft Cost					\$139,225.00	
<b>Option 1 Total</b>						<b>\$7,538,737.00</b>



EDGEWOOD, IOWA

11/1/2016 10:30:37 AM



## Edgewood-Colesburg CSD Master Plan Cost Estimates

StruXture Architects

### Preliminary Cost Estimate

11/1/2016

	Unit	SF	Cost/ Sq Ft	Sub-Totals	Fees & Contingency	Totals
<b><u>Jr/Sr High School Renovations/Additions</u></b>						
<b>Gym Scheme 3</b>						
New Entrance / Office / Gym Addition	19800	SF	\$200.00	\$3,960,000.00		
Elevator			-	\$80,000.00		
Art Remodeling	1495	SF	\$150.00	\$224,250.00		
					\$526,634.00	
				<b>Scheme 1 Total</b>		<b>\$4,790,884.00</b>
<b>Optional Parking / Drive</b>	57165	SF	-	\$448,000.00	\$70,616.00	<b>\$518,616.00</b>
<b>Optional Stage / Gym Renovation</b>						
Optional Stage	3380	SF	\$250.00	\$845,000.00		
Optional Wrestling / Corridor Connection	2895	SF	\$150.00	\$434,250.00		
Optional Demo Bus Building				\$15,000.00		



# Improvements

HVAC – Both elementary and secondary systems are aging and more efficient options are available.

Electrical Updates – Secondary building is a mixture of electrical networks due to additions.

Windows – More efficient options are available.

Parking Lots – Safety of loading students. Avoid highway parking for events.

Bus Barn – Current bus barn is inefficient and newer buses do not fit. Storage is also needed for other equipment.

Gym – Gym is focal point of district/community. Current gyms are undersized in modern terms. Ground level more handicap accessible. Allows for later start times and possible tournaments.

# Effect on Taxpayer



If only extending \$2.70 levy, no increase from current rate.

From the 2014 American Community Survey, the median home value for Delaware County was \$125,300 and for Clayton County is \$102,400. The additional PPEL for a home appraised at \$125,000 is \$7.22 per month; \$5.67 per month for the \$100,000 home.

# Recap

**Goal: Provide the best facilities while being fiscally responsible.**

Comply with state/federal mandates

Improve Student Achievement

Provide Safe Learning Environment

Maximize impact on upkeep of facilities

Attract teachers and/or families

Maximize support from community

---

# Community Dreams



# Questions or Comments?



# Volunteers



- Parents
- Business Leaders
- Senior Citizens
- City Officials
- School Administrators
- Teachers
- Students
- Community Leaders



# Needs vs. Wants

Building Conditions/Maintenance

New Verses Old/Modernize

Special Facilities Are Needed

Security/Safety

Improved Educational Program

Increased Enrollment

Technology

Operation/Maintenance Costs/Energy Costs Savings

Facilities Damaged/Destroyed



# Revenue Options

1. Voted G.O. School Bonds
  - a. Up to a \$2.70 tax levy, maximum 20-year repayment: 1 Ballot Question with 60% approval
  - b. Up to a \$4.05 tax levy, maximum 20-year repayment: 2 Ballot Questions, EACH with 60% approval
2. PPEL Notes
  - a. Up to a \$1.34 tax levy, maximum 10-year repayment: 1 Ballot Question with 50%+1 approval
  - b. In order to borrow, the tax must be collected from Property Taxes and not Income Surtax
3. Sales Tax Revenue Bonds
  - a. With a Revenue Purpose Statement in place, maximum borrowing through 2029, based upon revenue coverage requirements of enrollment vs. revenue per student amount: 1 Ballot Question to approve a new Revenue Purpose Statement with 50%+1 approval
  - b. WITHOUT a Revenue Purpose Statement in place, maximum borrowing (for Ed-Co) through 2022, based upon revenue coverage requirements of enrollment vs. revenue per student amount: NO Voting required since you are not exceeding your prior county-wide sales tax expiration date of 2022